

LOW PROFILE LOAD CELL ASSEMBLY FOR SILO, TANK AND VESSEL WEIGHING

capacities 2.5t - 30t



Vessel weighing problems solved simply and cost effectively.

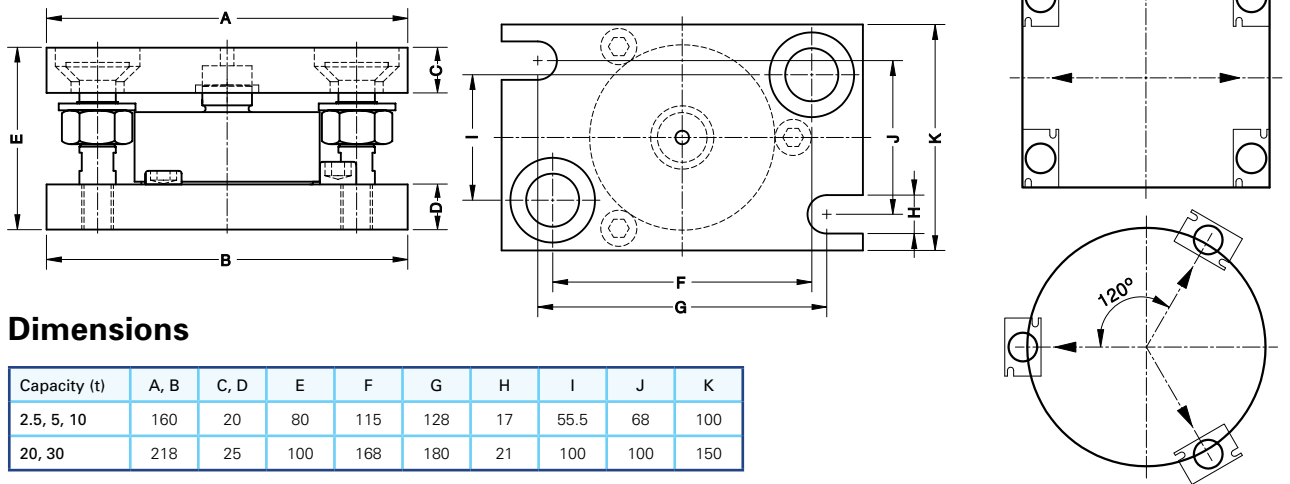
The T20 stainless steel compression load cell is specifically designed as a reliable, simple, low cost solution for weighing of tanks, silos and vessels where level measurement is the main criteria.

The load cell is mounted in either a zinc plated or stainless steel low profile, extremely compact mounting assembly which has integral jacking to allow load cell installation and removal, lift-off prevention and allowance for angular mis-alignment. The design is suitable for use either as a totally live system with load cells under all legs/support points of the vessel or where cost is paramount, in a dummy system with either one live and two dummy cells or two live and two dummy cells.

- Stainless steel compression load sensor
- Fully welded and hermetically sealed construction to IP68 / IP69K
- Allows vessel expansion and contraction
- Integral jacking facility
- 1000 division accuracy
- Low profile, extremely compact loading assembly
- Integral lift off prevention
- Allowance for angular mis-alignment
- 5 year warranty
- Durable and chemical resistant polyurethane cable

T20

technical specification...



Dimensions

| Capacity (t) | A, B | C, D | E | F | G | H | I | J | K |
|--------------|------|------|-----|-----|-----|----|------|-----|-----|
| 2.5, 5, 10 | 160 | 20 | 80 | 115 | 128 | 17 | 55.5 | 68 | 100 |
| 20, 30 | 218 | 25 | 100 | 168 | 180 | 21 | 100 | 100 | 150 |

All dimensions in mm

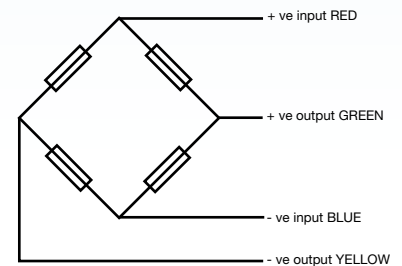
T20 Load Cell

| | Load cell specification | Units |
|---------------------------------|-------------------------|-------------------------|
| Load Cell Capacities | 2.5, 5, 10, 20, 30 | t |
| Full Load Output | 2.0 +/- 0.1% | mV/V |
| Excitation Recommended | 10 | V |
| Excitation Maximum | 15 | V |
| Safe Service Load | 150 | %* |
| Ultimate Load | 200 | %* |
| Combined Error | < +/- 0.05 | %* |
| Repeatability | < +/- 0.015 | %* |
| Output at Zero Load | +/- 2.0 | %* |
| Input Resistance | 800 +/- 30 | Ω |
| Output Resistance | 700 +/- 5 | Ω |
| Operational Temperature Range | -30 to +70 | $^{\circ}\text{C}$ |
| Compensated Temperature Range | -10 to +40 | $^{\circ}\text{C}$ |
| Temperature Coefficient on Zero | < +/- 0.002 | %* / $^{\circ}\text{C}$ |
| Temperature Coefficient on Span | < +/- 0.0036 | %* / $^{\circ}\text{C}$ |
| Environmental Protection | IP68 | |
| Insulation | > 5000 | M Ω |
| Cable Length | 10 | m |

*All percentages are related to Full Rated Load

LA20 Mounting Assembly

| Mounting Assembly | Load Cell Capacity (t) | Maximum Lift Off (kg) | Maximum Side Load (kg) | Maximum Side Offset (mm) |
|------------------------------|------------------------|-----------------------|------------------------|--------------------------|
| LA20-10T-ZINC LA20-10T-SS | 2.5 | 7342 | 2243 | +/- 3 |
| | 5 | | | |
| LA20-30T-ZINC LA20-30T-SS | 10 | 12644 | 3263 | +/- 3.5 |
| | 20 | | | |
| | 30 | | | |



Electrical Connections

Via 4 wire, 5.7mm diameter, screened polyurethane cable.
Screen not connected electrically to load cell.

DISTRIBUTED BY:



THAMES SIDE SENSORS LTD

Unit 10, io Trade Centre, Deacon Way, Reading, Berkshire RG30 6AZ

tel: +44 (0) 118 941 1387

fax: +44 (0) 118 941 2004

sales@thames-side.co.uk

www.thames-side.com



Issue: T20.07.13

Our policy is one of continuous product enhancement. We therefore reserve the right to incorporate technical modifications without prior notification.