

ANTI-VIBRATION MOUNTS FOR HARSH INDUSTRIAL ENVIRONMENTS

capacities 5kg - 300kg




The fully welded stainless steel T66 load cells used in this anti-vibration mount are hermetically sealed to meet IP68 & IP69K and can be used in the harshest industrial environments.

These mounts are suitable for weighing platforms, bag fillers, belt weighers and tank weighing in the Food Processing, Chemical, Pharmaceutical and general Bulk Handling industries.

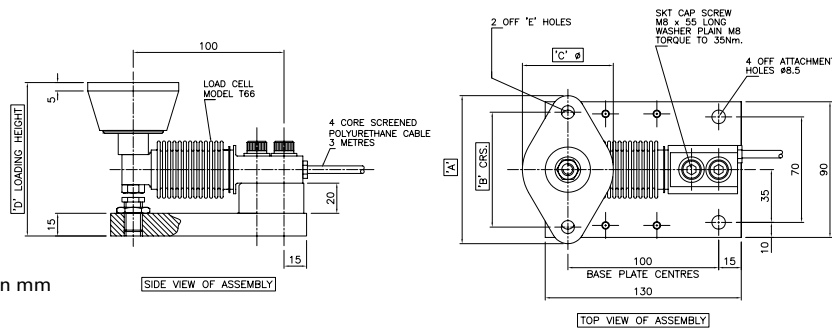
Available with intrinsically safe ATEX certification for use in both gas and dust zones. Certification for use in dust zones 20, 21 and 22 without safety barriers is also available.

For applications in aggressive environments where stress corrosion or acid attack is an issue, a special parylene coating can be specified as an option, as can custom cable lengths for volume OEM customers.

- Stainless steel load sensor & mounting assembly
- Hermetically sealed, fully welded construction
- Ease of installation
- Sealed to IP68 / IP69K
- 3000 divisions OIML R60 Class C
- 5 year warranty
- High Integrity cable entry
- 6 wire (with sense wires) option
- High durability PU cable
- Available in  version

LA66

technical specification...



All dimensions in mm

Dimensions

Capacity (kg)	A (mm)	B (mm)	C (mm)	D (mm)
20 - 50	79.4	60.3	44.5	95
100 - 200	98.4	76.2	60	103

2 Sizes of Rubber Pad also effects weight

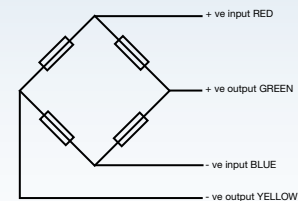
Model T66 ATEX Certification

Code	Temperature Class	Parameters	Application
II 1 GD Ex ia II C T4..T6 Ga IP68 T85°C Ex ia IIIC T135°C T85°C Da Ex ta IIIC T85°C Da	T4	Pi = 2.50W	Gas Zones 0, 1, 2 with safety barriers
	T5	Pi = 2.50W	
	T6	Pi = 1.69W	Dust Zones 20, 21, 22 without safety barriers

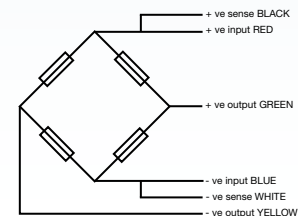
T66 Load Cell

	Load cell specification	Units
Load Cell Capacities	5, 10, 20, 30, 50, 75, 100, 150, 200, 250, 300	Kg
Rated Output	2	mV/V +/-0.1%
Accuracy Class	3000	n.OIML
Combined Error	< +/- 0.017	%*
Non-repeatability	< +/- 0.015	%*
Creep (30 minutes)	< +/- 0.016	%*
Temperature Effect on Zero Balance	< +/- 0.002	%* / °C
Temperature Effect on Span	< +/- 0.0012	%* / °C
Compensated Temperature Range	-10 to +40	°C
Operating Temperature Range	-20 to +70	°C
Safe Overload	200	%*
Ultimate Overload	300	%*
Zero Balance	< +/- 1	%*
Input Resistance	400	Ω +/- 20
Output Resistance	350	Ω +/- 3
Insulation Resistance	> 5000	MΩ @ 100V
Recommended Supply Voltage	10	V
Maximum Supply Voltage	15	V
Environmental Protection	IP68 / IP69K	
Cable Length	3	m
Cable Material	Polyurethane	
Nominal Shipping Weight	1	kg

*With respect to rated output



4 Wire Connection



6 Wire Connection

Electrical Connections

Via 4 or 6 wire, 5.7mm diameter, screened polyurethane cable.

Screen not connected electrically to load cell.

Construction

Load Cell and loading assembly manufactured from 17 - 4PH stainless steel heat treated to H900 condition - 1379N/mm² UTS.

Base-Stainless Steel.

DISTRIBUTED BY:



THAMES SIDE SENSORS LTD

Unit 10, io Trade Centre, Deacon Way, Reading, Berkshire RG30 6AZ

tel: +44 (0) 118 941 1387

fax: +44 (0) 118 941 2004

sales@thames-side.co.uk

www.thames-side.com



Issue: LA66.07.13

Our policy is one of continuous product enhancement. We therefore reserve the right to incorporate technical modifications without prior notification.

