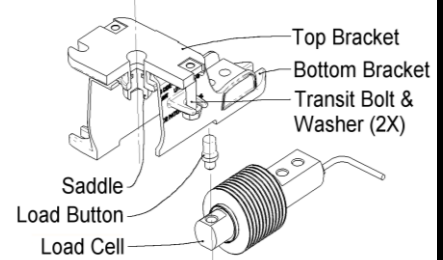


Please read these instructions in conjunction with the Levermount® Specification (available on request).

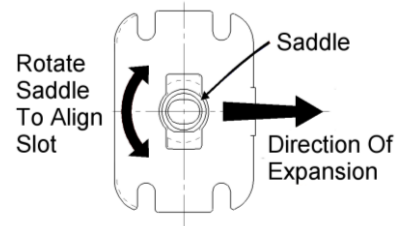
WARNING: Make sure that the working load of the vessel will never exceed the rated load of the load cells and the LeverMount® assemblies. To prevent the risk of serious injury or death, the system must be designed to work safely at all times and under all conditions. Also, never electrical weld in close proximity to any load cell.

1) Unpack the LeverMount® assembly and the load cell. Do not loosen the transit bolts yet. Check the items are not damaged and that all the intended parts are included. Each LeverMount® shipping assembly should contain: -

- 1x LeverMount® Assembly
- 1x Load Cell
- 1x Load Button

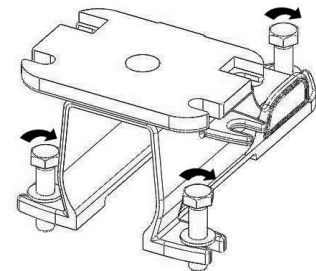


2) Rotate the saddle in the top bracket so that when the LeverMount® assembly is in its final position, the slot in the saddle will be aligned in the direction of the maximum expansion of movement, which is generally pointing into the centre of the weigh vessel.



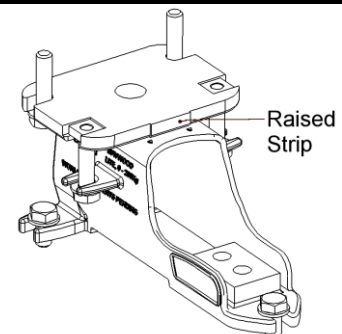
3) Mount the Levermount® assembly in position on the load bearing structure, and securely bolt it via the three slots in the bottom bracket. The attachment bolts are not supplied with the assembly and the required quantities are listed in the table below: -

Levermount® Product Type	Bolt Size	No of Bolts and Washers Required for Bottom Bracket	No of Bolts and Washers Required for Top Bracket
'0 - 200Kg' Levermount® Lite	M8	3	4
'0 - 2te' Levermount®	M12	3	4
'0 - 5te' Levermount®	M20	3	4

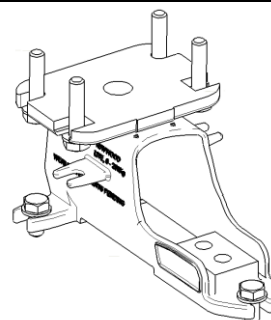


4) Position the vessel or structure to be weighed on the top bracket of the LeverMount®. Bolt the mating foot of the vessel or structure to the top bracket of the LeverMount® using two additional bolts (not supplied) in the free slots.

WARNING: The raised strip on the top bracket must be aligned with the two arrows on the mount to prevent serious injury or death.

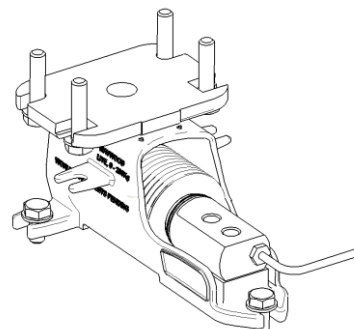


5) Loosen the two transit bolts and slide them free with the nuts. DO NOT DISCARD THE BOLTS AND WASHERS. The top bracket should be further secured to the vessel or structure using two additional bolts and washers (not supplied). Check that the top bracket raised strip is still aligned with the two arrows on the mount. At this stage the vessel is completely supported by the LeverMount® assembly.

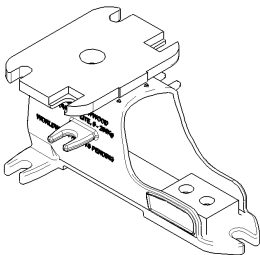
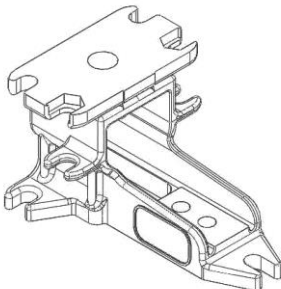


6) Ensure that the direction arrow on the front face of the load cell is pointing down and that all mating surfaces are free from debris. Fit the load button to the load cell and then slide the load cell, with the load button in place, into position within the LeverMount® assembly. Insert the two transit bolts and washers through the load cell fixing holes and hand tighten.

Ensure the load cell is parallel to the centre line of the LeverMount® assembly and alternately tighten the bolts.



7) Alternate the tightening of the two bolts to the specified torque in the table below: -

Levermount® Product Type		Bolt Torque
'0 – 200Kg' Levermount® Lite		20Nm
'0 - 2te' Levermount®		65Nm
'0 – 5te' Levermount®		285Nm

This action raises the weigh vessel and transfers the load to the load cell leaving it ready for operational weighing. **N.B 5te Levermount® can only raise 50% of full load capacity**

8) Periodically check the security of the mount and the attachment vessel.